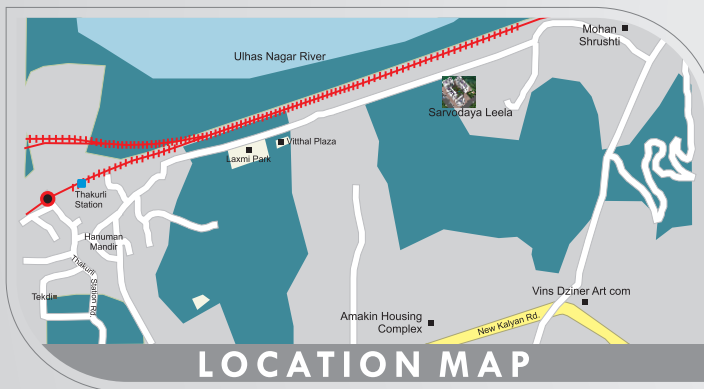




Location

It boasts of an excellent location in the pristine surroundings of Kanchangaon, Thakurli, and a superior quality of construction that sets us apart from the rest



**HAPPY HOME
GROUP**
THE PEOPLE WHO MAKE YOU HAPPY

Call : 2861470, 9819664997



Developers - Swastik Realtors
Off. Add.: 3, Shubhangi Darshan, Manpada Road, Near Shivaji Statue, Dombivli (E) 421 201.
Site Add.: Sarvodaya leela, Kanchangaon, Khambalpada, Thakurli (East)
E-mail: leela@irem4u.com
Website : www.happyhomeproperties.in

All plans, drawings, amenities, other information, etc. in this brochure are indicative of the kind of development that is proposed and are subject to the approval of the respective authorities. All renderings, floor plans, pictures, perspective views of buildings, interiors and maps are the artists' conceptions and not actual buildings, walls, roadways or landscaping. The developers reserve the right to make changes or alterations at their sole discretion without prior notice or obligation.



SARVODAYA LEELA AT KANCHANGAON, THAKURLI (E)

“Lifestyle Comforts Packaged
for your Convenience”

1BHK

1st, 3rd, 5th, 7th, 9th & 11th FLOOR PLANS

1BHK

2nd, 4th, 6th, 8th, 10th & 12th FLOOR PLANS

The most we value at Happy Homes is the importance of family. In all our projects we provide is the optimum utilization of space with lifestyle comforts be it the layout of complex or in our space efficient apartments.

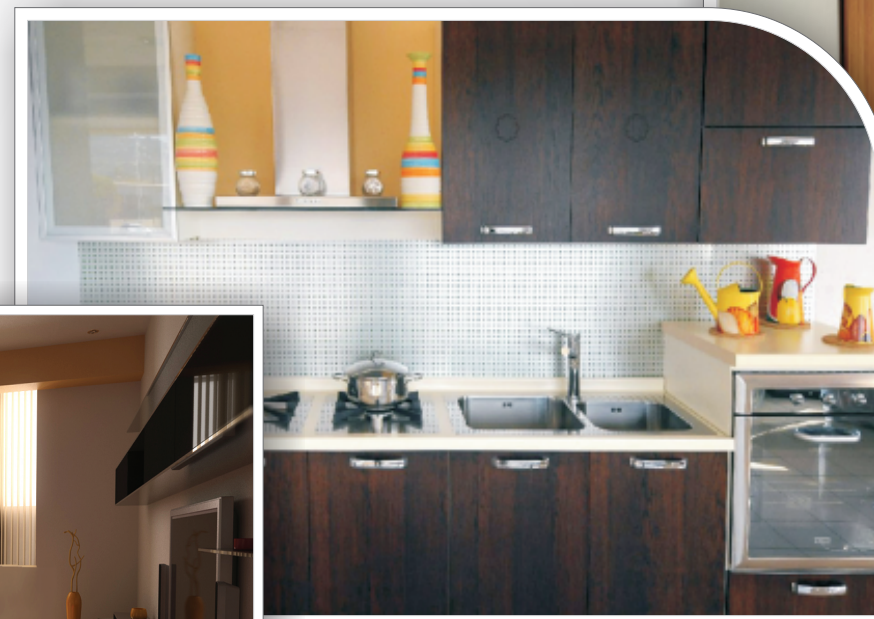
2BHK



2BHK

**GENERAL AMENITIES:**

8 towers of stilt + 12 storied each | Club House with Multipurpose Hall | Indoor Games Facility | Gymnasium | Spacious Entrance Lobby | Earthquake Resistant Structure | Intercom Facility for Security | Inverter backup for lifts, water pump & staircase | 24 hours security | Landscaped garden with children's play area | Waterproof Acrylic Paint on the Exteriors

*space efficient homes***INTERNAL AMENITIES:**

Apartment: 32" X 32" Vitrified flooring in all rooms | Decorative main door with quality fittings | Gypsum finish walls with oil bound distemper in pleasing shades for the interiors | POP moulding in Living Room | Powder coated aluminum sliding windows with reflective glass | Concealed copper wiring | Telephone & Cable TV Points in living room & master bedroom | Branded modular switches

Kitchen: Granite platform with Stainless steel sink | Utility area for washing machine | Full tiles in kitchen above platform

Bathroom: Non-skid ceramic tiles on the floor and glazed tiles on the walls | Branded Sanitaryware | Concealed Plumbing with premium quality C.P. fittings | PVC doors for Bath & WC | Electrical points for exhaust washing machine, A.C. etc

