



Sarvodaya Nagar

Ambarnath West



Happy Home
GROUP

THE PEOPLE WHO MAKE YOU HAPPY

&



NAHAR
GROUP

Sarvodaya Nagar

Ambarnath West



A Project by



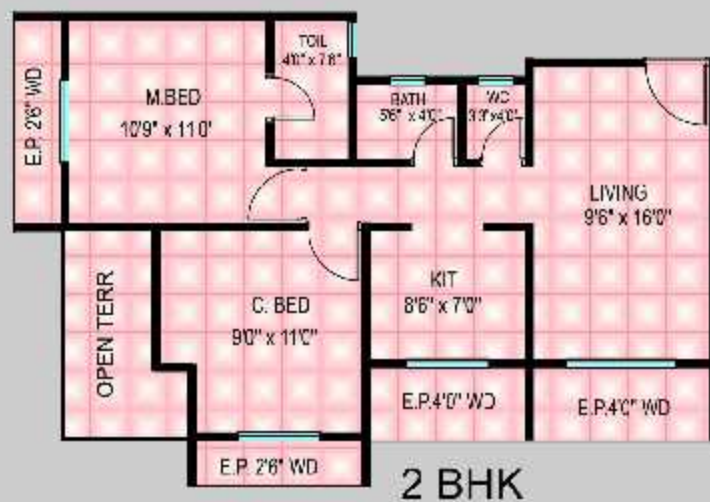
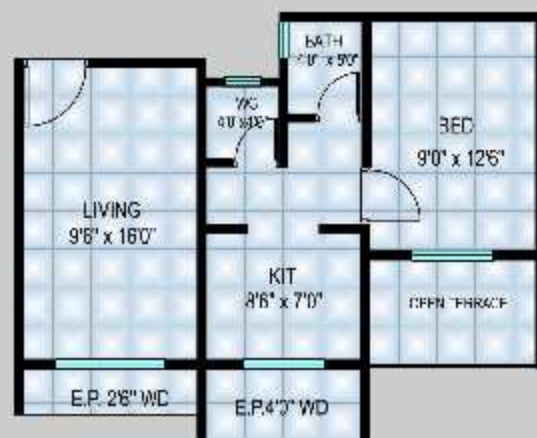
Happy Home
GROUP

THE PEOPLE WHO MAKE YOU HAPPY

&



NAHAR
GROUP





General Features

- ★ Project of around 1500 Flats
- ★ Lift & Common Area Power Backup
- ★ Huge Parking Space
- ★ Ample Children's Play Area
- ★ Within 3.5 km from
Ambernath & Badlapur Station
- ★ Eco-Friendly Township
- ★ The Club House & Indoor Games
- ★ Swimming Pool
- ★ Gymnasium
- ★ Intercom Facility





A lifestyle of peace and tranquility

Internal Amenities

Flooring:

- Vitrified flooring

Kitchen:

- Granite platform with Stainless steel sink.
- Utility area for washing machine.
- Full tiles in kitchen platform.

Toilet:

- Full Height premium tiles - dual colour.
- Branded Sanitary Fittings.

Wall Finish:

- Wall Putty finish walls with Quality paint.

Doors & Windows:

- Teak wood door frames with laminate finish flush doors and necessary fittings.
- Powder coated aluminum sliding windows with reflective Glass.

Electrification:

- Concealed Quality wiring.
- Telephone & Cable TV Points in living room & master bedroom.
- Branded modular switches.

Plumbing:

- Concealed piping system in kitchen & toilet.



All images are actual

Location Map



&



Developers - Thalia Investment Pvt. Ltd.

Site Off.: Sarvodaya Nagar, Jambhul Phata, Near Dental College, Ambarnath (West)

Website : www.happyhomeproperties.in

Call : 7030654878

All plans, drawings, amenities, other information, etc. in this brochure are indicative of the kind of development that is proposed and are subject to the approval of the respective authorities. All renderings, floor plans, pictures, perspective views of buildings, interiors and maps are the artists' conceptions and not actual buildings, walls, roadways or landscaping. The developers reserve the right to make changes or alterations at their sole discretion without prior notice or obligation.

All images are actual